



R950,000

Web Ref 983096

PROPERTY FEATURES

1 Bathroom | Security | Gym | Pool | Views | Garden

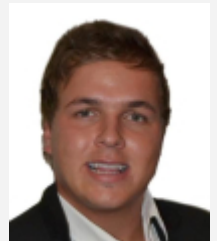
Build Your Dream Home !

Affordable Ultra Modern Building Packages available from one of the South of Johannesburg best property developers, mostly known for his developments in Aspen Hills Nature Estate. This stands is subject to building packages from the developer. Choose your finishes and make this property your dream home From R10 500 per square meter depending on finishes. (Excluding Stand Of R950k) Contact us to view stand and set appointment with developer. Eye of Africa Golf and Residential Estate is more than a location. It's one of South Africa's best lifestyles. Only a short distance from Johannesburg's CBD, Eye of Africa is a world away from the city's busy streets and offices. At Eye of Africa, the community and superior leisure facilities flow with the rolling hills and undulating landscapes. Beautiful homes weave their way through the woodlands and hug the Greg Norman designed championship golf course. It is a place that provides a family orientated and tranquil way of life.

ERF Size 787 m²

Rates R1,500 per month

Home Owner Levies R1,950



Brandon Swanepoel

c. 0826536703

brandon.swanepoel@rawson.co.za