



**R110 p/m<sup>2</sup>**

Web Ref 1008573

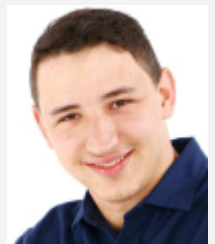
## PROPERTY FEATURES

### Upmarket Offices to Let in Montague Gardens - 75sqm

Prime offices to let on the Ground floor and 1st Floor in the well maintained Frazzitta Business Park, Montague Gardens. Direct access toward Koeberg road, and a MyCiti just across the road. Offices Details: Size: 75m<sup>2</sup> Rental: R110/sqm Excl Vat \* 2x Parking per 100sqm. \* Air conditioned offices. \* 24hr Access control & Security \* Staff ablutions. \* Insulated roof. Montague Gardens is a popular and relative modern industrial area located in Milnerton, which offers easy access onto the N7 highway and is a direct link to the N1 highway. Please call me in order to arrange a viewing, or for any additional information.

ERF Size 75 m<sup>2</sup>

Building Size 75m<sup>2</sup>



**Corneel Van Der Eems**

c.0721939629

corneel.vde@rawson.co.za