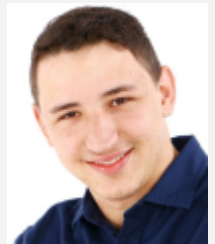


**R70 p/m²**

Web Ref 1002380

PROPERTY FEATURES**OFFICE TO LET IN MONTAGUE GARDENS**

Office size: 120m² Rental: R70p/m² excl VAT In addition to the rental - charged pro rata on actual costs - currently running at ± R7.39p/m² Security: R3.10p/m² - every night and during the day on week-ends and public holiday patrolling guard Electricity: R1750.00p/month Available immediately Excl VAT

ERF Size 120 m²Building Size 120m²**Corneel Van Der Eems**

c.0721939629

corneel.vde@rawson.co.za